

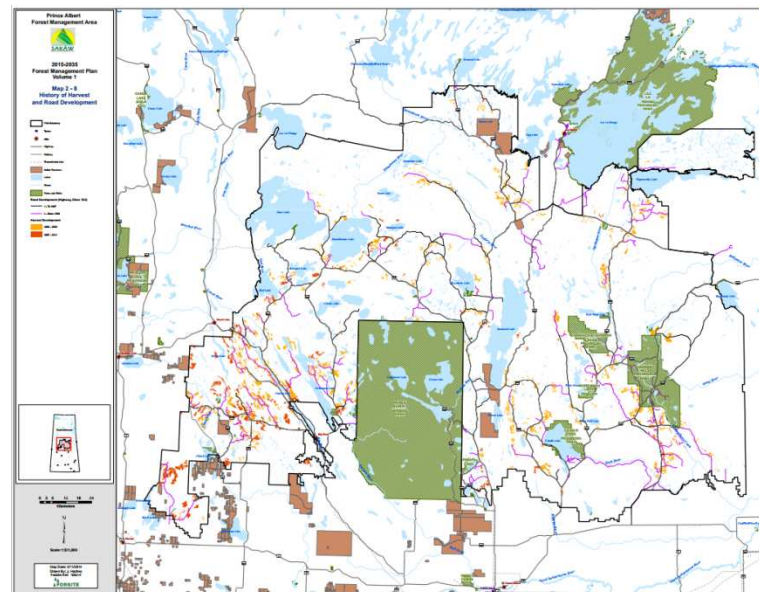
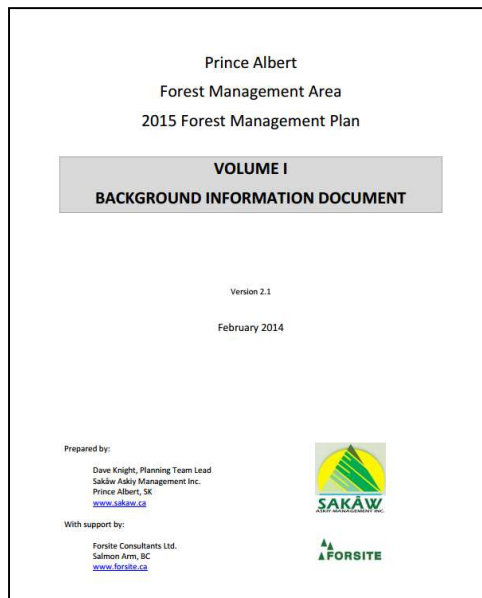
# Sakâw 2015-2025 FMP Update

April 30, 2014  
Public Advisory Meeting  
Prince Albert, SK

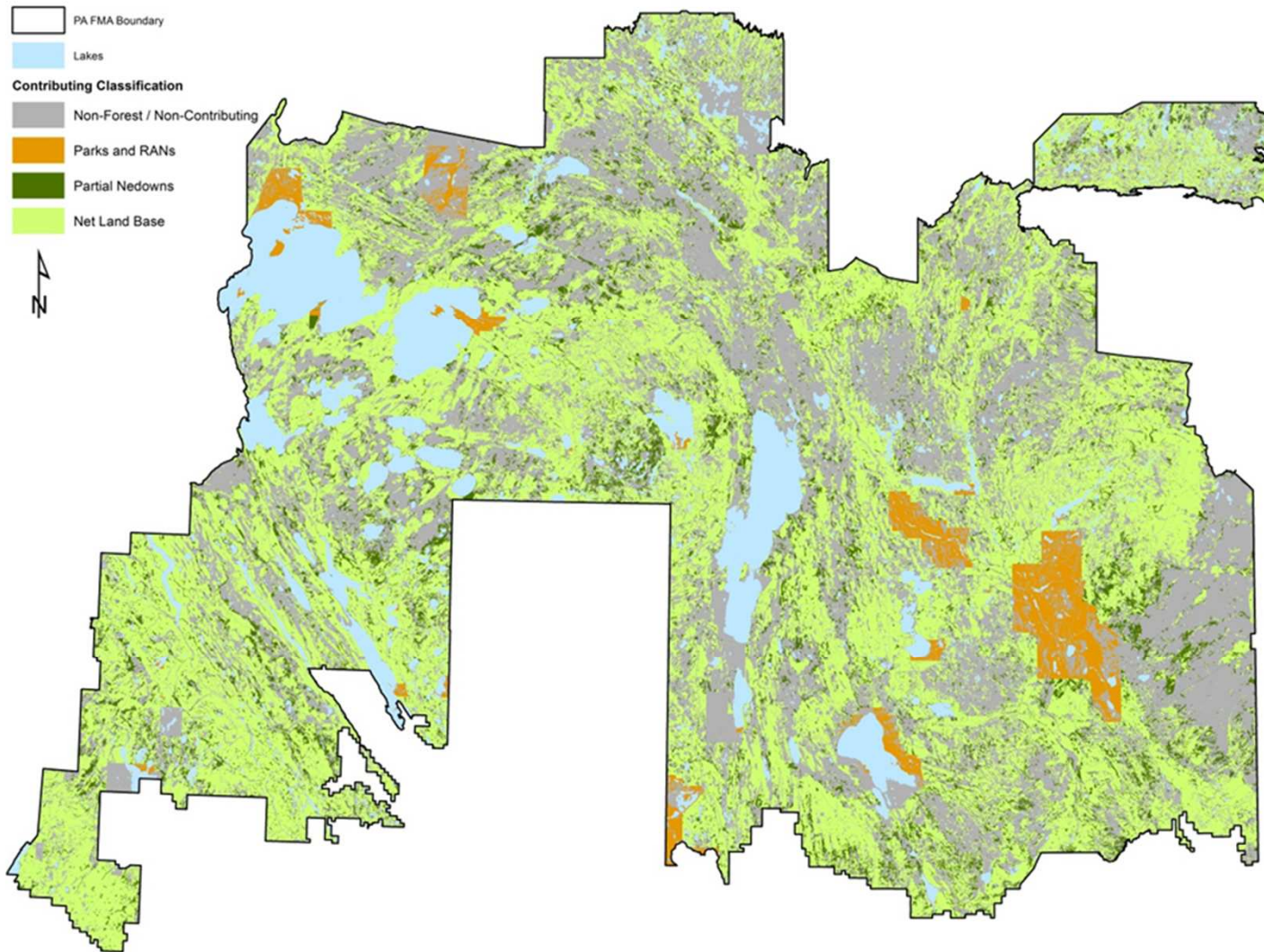


# Volume 1 Document

- **Volume 1 Document (v4) - Final**
  - Provides background information on the FMA and past practices.
  - Govt has completed aboriginal consultation – no changes needed.
  - Now in gov't sign off process.
  - Document and maps: [www.sakaw.ca](http://www.sakaw.ca)

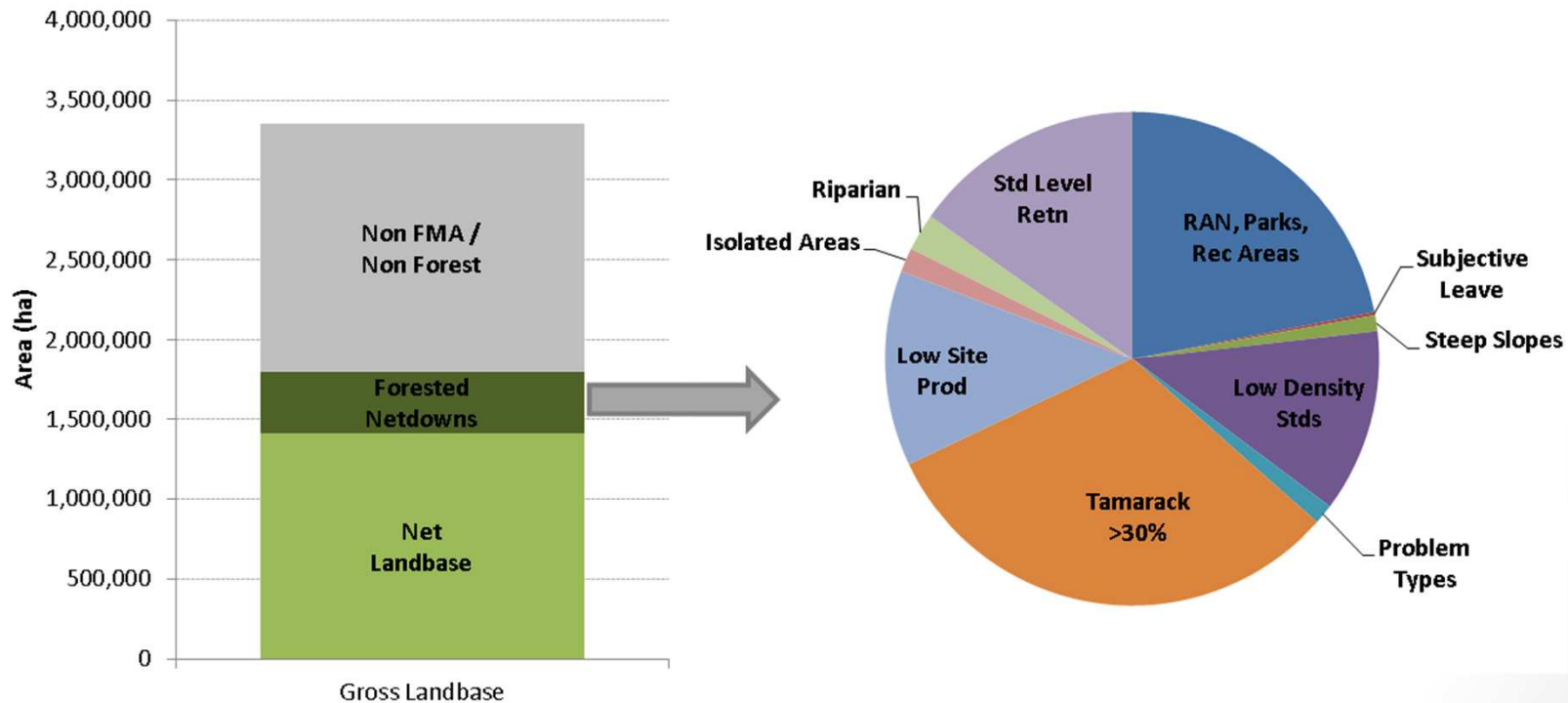


# Landbase Definition



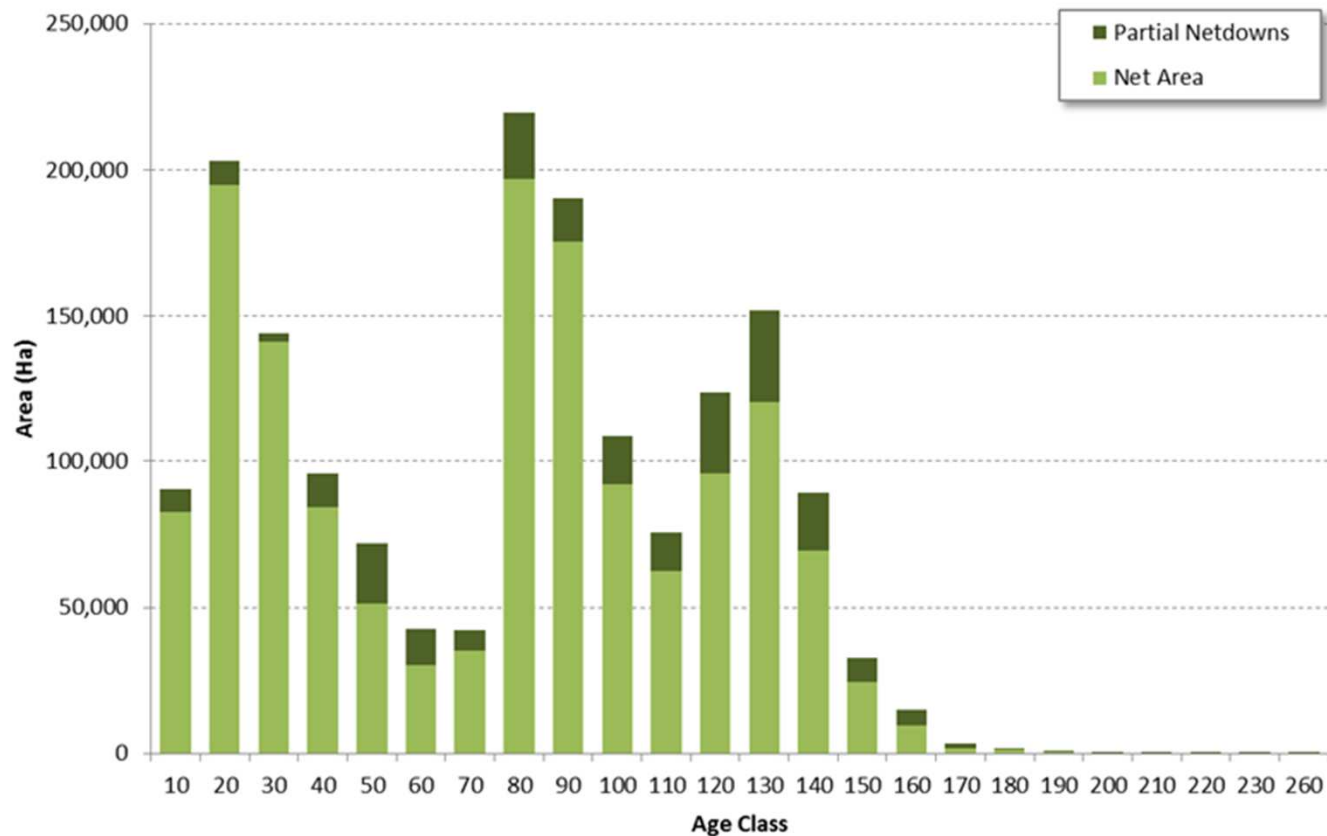
# Planning File (Spatial Dataset)

- Approved by government.
- Net landbase is 1.4 million ha (42% of FMA, 82% of Forested)



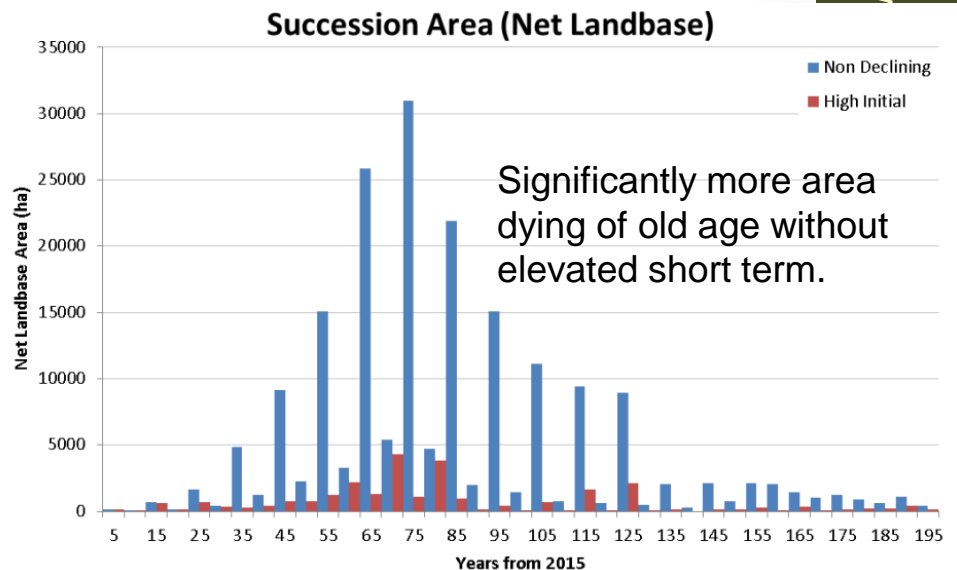
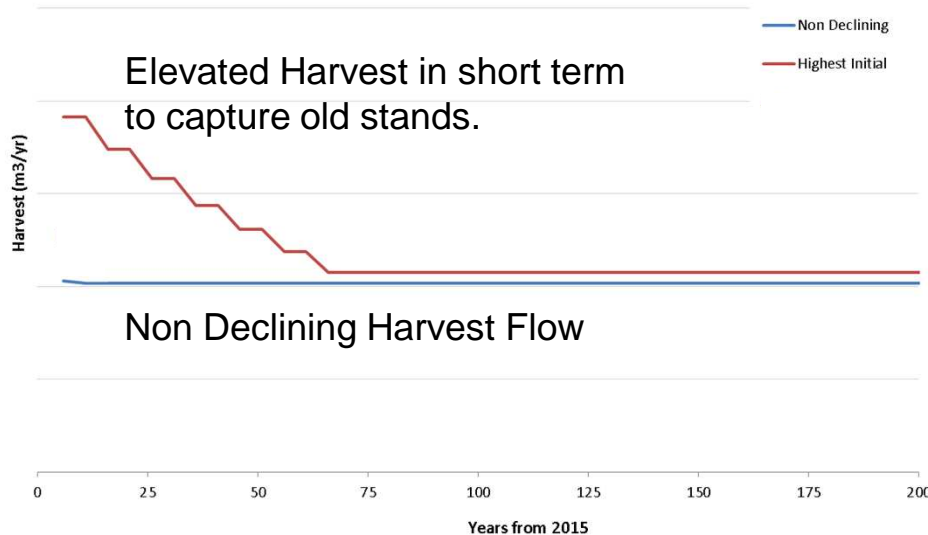
# Age of Forested Stands

- Large areas of older age classes present (fire suppression)



# Timber Supply Modeling

- **Timber Supply Modeling has begun and preliminary runs are complete that show:**
  - The existing age class structure is older than what would occur naturally under a fire disturbance regime.
  - An elevated harvest level in the short term could be used to reduce the amount of stands lost to old age (breakup/decay).
  - A Non declining harvest level has the same long term harvest level.



# Values, Objectives, Indicators and Targets

- Currently working in conjunction with gov't to define **indicators and targets** to be tracked/managed in FMP.
- Will cover issues such as:
  - 1. Biological Diversity**
    - e.g. % old forest to maintain
  - 2. Ecosystem Condition and Productivity**
    - e.g. % of harvested area successfully regenerated to FMA standards
  - 3. Soil and Water**
    - e.g. % of harvested areas consistent with FMA riparian standards
  - 4. Role in Global Ecological Cycles**
    - e.g. % of 2014 forested landbase that remains forested (any age)
  - 5. Economic and Social Benefits;**
    - e.g. % of harvest volume allocation actually harvested
  - 6. Society's Responsibility for Sustainable Development.**
    - e.g. Involvement of FMA's aboriginal communities.

# Example Indicators – Draft for Discussion

## Objective:

Conservation of the biological diversity of Saskatchewan's forests.

1. Area of old and very old forest by species group.  
(15% of area to be old in each MU/Species group)
2. Area of very old forest by species group.  
(5% of area to be very old in each MU/Species group)
3. Percent of softwood stands regenerated through planting.  
(Intent is to ensure existing stand types are maintained)
4. Area of old forest in Interior conditions (not 'edge')  
(expressed as a % of all old forest in FMA).
5. Area of residual trees left after harvest  
(9% of harvested area on average).
6. Size distribution of harvest events.  
80% of Events are >100 ha  
40% of Events are >1500 ha  
10% of Events are >3500 ha

These are linked to the draft Natural Forest Patterns Standard

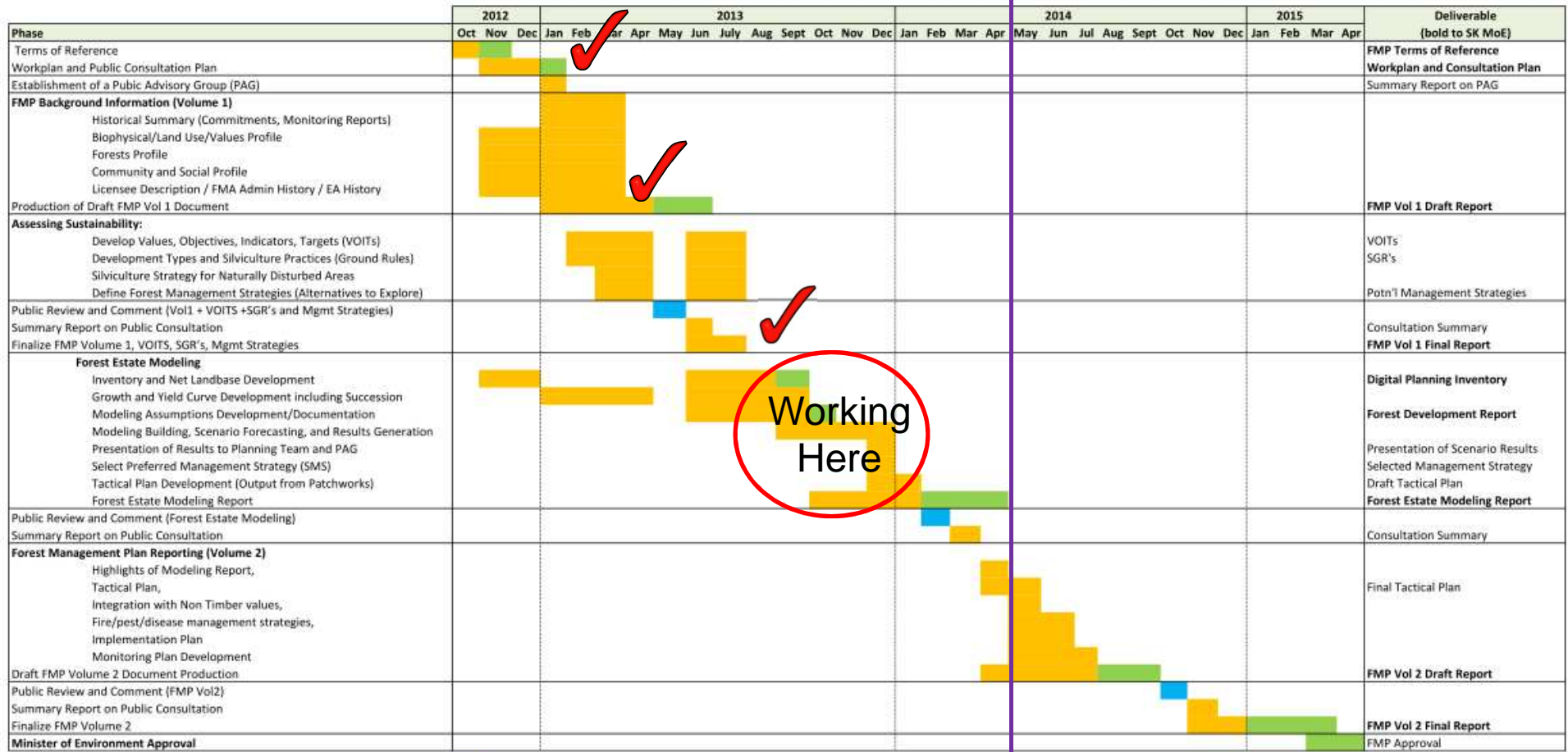


# Example Indicators – Draft for Discussion

- Examples available for all 6 categories shown earlier.
- Draft VOITS spreadsheet can be circulated to anyone who is interested in providing feedback.

# Timeline /Progress

Now (Behind Schedule)



Working Here

■ = Sakaw Timeline  
■ = SK MoE Review Timeline  
■ = Public Review and Comment Periods



# Status Summary

- **Timelines:**

- Growth and yield work to be approved by gov't early May(?)
- Have early modeling results out now but there is still uncertainty around NFP and Caribou.
- Currently working on development of VOITS. Gov't is also working on VOITs standard at same time.
  
- Aiming to have final modeling results by early summer. This will include a review of the tactical plan (20 yrs) by gov't for acceptability with Caribou.